



ripples of  
**IMPACT**

2025 LeadingAge Nebraska  
**BUSINESS ASSOCIATE DIRECTORY**

**APRIL 2025 – APRIL 2026**

## TABLE OF CONTENTS

- 3 President & CEO's Message
- 4-10 Platinum/Gold Business Associate advertisements
- 11 LeadingAge Nebraska Board of Directors
- 12 Professional Development
- 13 2025 Education & Event Calendar
- 14 LeadingAge National & Advocacy
- 15 Agency Contacts
- 16 Area Agencies on Aging
- 18 -19 Business Associate Members List
- 20-23 Platinum & Gold Business Associate Listings
- 24-57 Business Associate Listings (alphabetical)

## LEADINGAGE NEBRASKA STAFF

- Kierstin Reed  
President & CEO  
kierstin.reed@leadingagene.org
- Natalie McCormick  
Director of Marketing & Professional Development  
natalie.mccormick@leadingagene.org
- Julie Hulinsky  
Administrative Assistant  
julie.hulinsky@leadingagene.org

## A MESSAGE FROM KIERSTIN



*"Ripples of Impact" is a critical inflection point, leveraging the power of LeadingAge Nebraska members across the continuum to create a far-reaching pattern of profound change.*

*The actions of those providing care, along with the valuable partners listed in this directory, reverberate throughout the field, creating a ripple effect extending to the people, families, and communities they serve around our state.*

Welcome to the LeadingAge Nebraska Business Directory, your comprehensive guide to the businesses that support and empower long term care providers across our state. As an association representing a diverse array of aging services care providers, we understand the vital role that businesses play in ensuring the success and sustainability of your organization.

By supporting the businesses listed in this directory, you are not only investing in your own success but also in the success of our entire association. Many of our business members offer exclusive discounts and services tailored specifically for LeadingAge Nebraska members, providing added value to your membership. We are immensely grateful for the continued support of our business partners, whose contributions enable us to fulfill our mission of advocacy, education, and connection for our members throughout the year. Together, we strive to create a thriving ecosystem where long-term care providers can flourish and provide the best possible care to those they serve.

Thank you for your ongoing support of LeadingAge Nebraska.

KIERSTIN REED  
LEADINGAGE NEBRASKA PRESIDENT & CEO

Quality First Insurance is now Gallagher Insurance - same great service and same great team!

## Are you getting dividends on your work comp program?

Since its inception in 2017 and the first Dividend Calculation in 2019, Quality First Insurance's Dividend Program Has Paid Out Over \$538,031 back to clients!

*Give Kathy and her team a call to get a no obligation quote on how you too can be part of this phenomenal program!*



**Gallagher**

Insurance | Risk Management | Consulting

*As a gold sponsor since 2013 we are proud to represent LeadingAge Nebraska and the members it serves.*

**Kathy Mock, Area Vice President**  
**9801 Giles Rd, Suite 2, LaVista, NE 68128**  
**866-809-6476 Kathy\_Mock@ajg.com**

## arCureitecture

*culture and relationship driven  
architectural design*



where VISIONS...



arCureitecture is an award-winning architectural firm providing comprehensive building design & consulting services specializing in senior living.

...become REALITIES



Do you have questions? We have answers. Contact us today!  
 402-805-4908 | [www.cure.design](http://www.cure.design) | [jahl@cure.design](mailto:jahl@cure.design)





## Built to be different. Built to be better.

At Guardian, we are **reimagining medication management** and **transforming care** for older adults and individuals with complex care needs.

We promote health and wellness for older adults and individuals with complex care needs, alleviate burdens for caregivers, and provide an engaging, purpose-filled workplace for pharmacy professionals.

Guardian's tech-enabled pharmacy services simplify the complexities of medication management, improving individual health outcomes, enhancing medication adherence, reducing healthcare costs, and driving value for the communities we serve.

Our national network of pharmacies offers high-touch, innovative services that benefit residents in complex care settings, such as assisted living, mental and behavioral health, post-acute and long-term care, and hospice, as well as community providers that support individuals with intellectual and developmental disabilities.

### Guardian Pharmacy of Omaha

11171 Mill Valley Rd, Omaha | 402-263-6430

### Midwest LTC Pharmacy

2208 N Webb Rd Unit 3, Grand Island | 308-398-0538



## Clinical education on your schedule

### Get to know McKesson Academy™

Our no-cost online portal with over 270 resources and 60 CE training courses. Get your continuing education wherever and whenever works for you, for truly on-demand learning.

Join today at [mms.mckesson.com/mckesson-academy](https://mms.mckesson.com/mckesson-academy).

**Jon Kunce**, Account Manager  
jon.kunce@mckesson.com  
402.304.7856

© 2024 McKesson Medical-Surgical Inc.

**McKESSON**



## HEALTH CARE INFORMATION SYSTEMS

the most comprehensive cost-containment purchasing program  
for senior living providers

## MEDI-BILL SYSTEMS

a proven means to maximize Medicare Part A and Medicare Part B income

*Contact us today to learn how you can connect  
with suppliers like these:*



helping you provide quality care with cost-containing and revenue-enhancing programs

## HEALTH CARE INFORMATION SYSTEMS / MEDI-BILL SYSTEMS

450 Regency Parkway, Suite 100, Omaha NE 68114  
800-888-1450  
hcis-mbs.com



**Custom Software Development  
and Related IT Services**

**View360** An "in the cloud" Senior  
Care Management Platform

**View360** consolidates the "right" data from  
multiple systems, databases, spreadsheets,  
partners, etc. ...

*... and offers unique applications and modules to  
effectively manage, track & evaluate services, clients,  
departments, and internal/external environments.*

**It is a menu-driven, license-based platform  
with modules customized to your  
organization.**

Modules include dashboards, charts, graphs, analytics,  
drill-down/multiple levels, custom reports, alerts,  
custom applications, and more.

## All Your Data, Your Way

**Contact Mike Fisk, Business Development,  
for more information!  
mfisk@gurualliance.com 402-990-4852**

The Landmark Center, 299 Farnam St. Suite 300 Omaha, NE 68102  
[www.gurualliance.com](http://www.gurualliance.com)





**FUSION  
WORKFORCE  
SOLUTIONS**

## A modern approach to healthcare staffing.

With Fusion Workforce Solutions, you gain access to a curated panel of agencies, compliance auditing, market rate insights, and real-time analytics, which are all designed to greatly reduce your administrative burden and free up valuable resources.

- One staffing agreement**  
Single contract to streamline rates and terms
- One concise invoice**  
Consistent rates regardless of agency
- One dedicated contact**  
Complete access to resources for billing, compliance, clinical, candidate flow, and more
- One consistent process**  
Quality travelers compliant and ready to start

learn more at [fusionworkforce.com](https://fusionworkforce.com)

## BOARD OF DIRECTORS

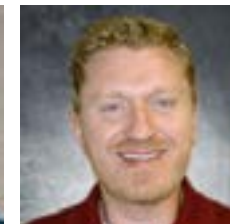
We are fortunate to have a talented group of our membership serve as the 2025 Board of Directors. Together they help set the strategic direction of the Association and formulate our goals and objectives.



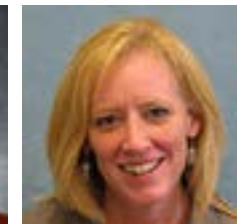
Brody Chandler  
Chair  
Immanuel Lakeside  
Village, Executive  
Director



Lois Jordan  
Chair  
Midwest Geriatrics,  
President/CEO



Matt Ross  
Treasurer  
Rural Health  
Development, Vice  
President



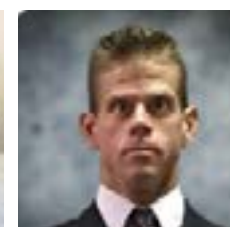
DeDe Will  
Secretary  
Douglas County  
Health Center,  
Director of Finance



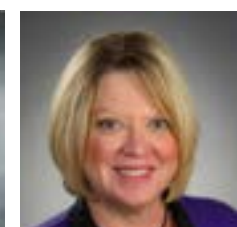
Andrew Fisher  
Director  
Eastmont, Executive  
Director



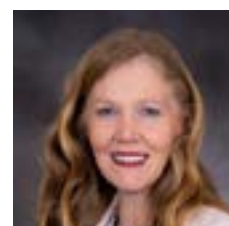
Sarah Stull  
Director  
Kimball County Manor  
and Assisted Living,  
Administrator



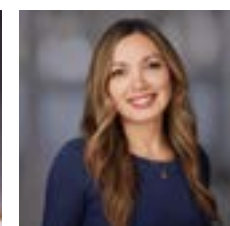
Jared Denton  
Director  
Rural Health  
Development,  
Special Projects



Cheryl White  
Director  
Cambridge Court AL,  
Executive Director



Becky Bruce  
Director  
Cedarwood AL,  
Administrator



Jinae Heldmann  
Director  
Immanuel, Associate  
Executive Director

## PROFESSIONAL DEVELOPMENT



LeadingAge Nebraska remains committed to offering events that are relevant, accessible, and cost-effective for both members and non-members. We continue to provide a variety of in-person and virtual opportunities designed to accommodate busy schedules. Our Annual Conference & Expo in Kearney was another great success and we're already excited for what next year will bring!

Mark your calendars for the LeadingAge Annual Meeting, taking place November 2–5, 2025, in the historic city of Boston, MA. I can't wait to experience all that the city has to offer! Keep an eye out for more details on the national conference, including Midwest State Night Out on Sunday evening, November 2.

Details about sponsorships, upcoming conferences, and events are shared in our weekly education email, typically sent on Tuesday mornings. You can also find the latest updates on our education calendar at [www.leadingagene.org](http://www.leadingagene.org). If you have ideas for educational training topics, I'd love to hear from you!

NATALIE MCCORMICK

DIRECTOR OF MARKETING & PROFESSIONAL DEVELOPMENT



## 2025 EDUCATION & EVENT CALENDAR

**Nurse LEAD: Strategies for Effective Leadership** Jan 14 - Mar 11, 2025

**FREE Webinar Series for members, 2nd Friday of each month**

**Workforce Partnership Quarterly Meetings with Fusion & BetterCulture**

**2025 Legislative Reception**

February 6, 2025, 4:30 - 6:30 pm, Billy's Restaurant

**Avera Med Aide/Nurse Aide Program Overview (virtual)**

March 4, 2025, 2:00 - 3:30 pm CT

**LeadingAge Nebraska Annual Conference & Expo**

Pre-conference, March 31, 2025, Conference, April 1-2, 2025  
Kearney, NE @ Younes Conference Center South

**Exploring Ethical Dilemmas in Aging Services**

Thursday, April 24, 2025, Omaha, NE @ Fusion Medical Solutions

**Trauma-Informed Care 3-Webinar Series**

August 8-15-22, 2025, 11-12 pm CDT (10-11 am MDT)

**MDS Excellence: Elevate Quality, Drive Outcomes - TWO FULL DAYS**

August 19-20, 2025, Lincoln, NE

**LeadingAge Nebraska Star-Spangled Scramble**

Thursday, September 4, 2025, 1:00 pm shotgun start, followed by dinner  
Woodland Hills Golf Course

**2025 Fall Symposium**

Lincoln, Nebraska - September 30, 2024 (Lincoln, NE)

**LeadingAge Annual Meeting**

November 2-5, 2025, Boston, MA  
Midwest State Night Out: Sunday, November 2, 2025

**Monthly Member Connection Zoom Meetings**

3rd Tuesday of every month 2-3 pm CT (1-2pm MT)

**SAVE THE DATE:**

**2026 LeadingAge Nebraska Annual Conference & Expo**

March 16-18, 2026, Younes Conference Center South, Kearney, NE

**More events will be added throughout the year!**

## LEADINGAGE NATIONAL

Our national partner is an association of over 6,000 not-for-profit organizations, and together we are the trusted voice for aging in America. Their promise is to Inspire, Serve and Advocate, with a vision of an America freed from ageism.

2519 Connecticut Avenue, NW  
Washington, DC 20008-1520  
Phone (202)738-2242  
[www.LeadingAge.org](http://www.LeadingAge.org)

### MY.LEADINGAGE ACCOUNT\*

To create a My.LeadingAge account and get access to all the member benefits go to <https://my.leadingage.org/core/user/login.aspx>. If you need assistance with your My.LeadingAge account call 1-888-508-9441 or email [MyLeadingAgeSupport@LeadingAge.org](mailto:MyLeadingAgeSupport@LeadingAge.org). \*For provider members only - Business Associate members may have a separate LeadingAge national account, but do not receive it as part of their LAN membership.

## ADVOCACY

LeadingAge Nebraska provides members with up-to-date information about legislation, regulation changes, and other policy initiatives impacting our Member's daily operations. We have a contract lobbyist, Kent Rogert, who advocates for the interests and needs of our Members before the Nebraska Legislature and the administrative departments of DHHS.

In addition, our President & CEO is actively involved in this process and advocates for our Members with state and federal policy makers. Aging Services needs and deserves advocacy which focuses on their special needs and interests, and that's just what LeadingAge Nebraska does.

### JENSEN ROGERT ASSOCIATES

625 South 14th St., Suite A  
Lincoln, NE 68508-2737  
[www.jensenrogert.com](http://www.jensenrogert.com)  
Email contact: Kent Rogert  
[kent@jensenrogert.com](mailto:kent@jensenrogert.com)



## AGENCY CONTACTS

Nebraska Department of Health and Human Services—Medicaid and LTC,  
301 Centennial Mall South, Lincoln, Nebraska 68509



ACCESSNebraska - Medicaid Toll-Free Number: 855-632-7633  
Main Number Lincoln: 402-473-7000  
Main Number Omaha: 402-595-1178

### Division of Medicaid and Long-Term Care

Matt Ahern, Interim Director	(402) 471-2135
Jeremy Brunssen, Finance & Program Integrity Section	(402) 471-9362
Nate Watson, Privacy & Compliance	(402) 471-0300
State Unit on Aging	(402) 471-2307

### Other Key Contacts

Dr. Matthew Donahue, Chief Medical Officer & Director	(402) 471-8566
Becky Wisell, Deputy Director, Public Health	(402) 471-0928
Dan Taylor, Administrator, Health Facilities	(402) 471-9207
Ann Oertwich, Program Mngr, Nurse Aide, Medication Aide Registry	(402) 471-0317
Deanna Novak, Program Manager, LTC Facilities	(402) 471-3324
Penny Clark, State Long-Term Care Ombudsman	(402) 471-9345
Doug Hobein, State Fire Marshal's Office	(402) 471-9478
Adult Protective Services	(800) 652-1999



## NOTES

[illegible]

Blue Rivers Area Agency on Aging  
Toll Free # 888-989-9417  
[www.blueriversaaa.org](http://www.blueriversaaa.org)

## 2025 BUSINESS ASSOCIATES

## PLATINUM LEVEL



## GOLD LEVEL



## SILVER LEVEL

CBS Construction Services	Prairie Health Ventures
Consonus Pharmacy	Redler's LTC Pharmacy
Blue Stone Therapy	Schemmer
Martin Brothers Distributing	Southeast Community College
Medicine in Motion	Sysco Lincoln
Nebraska Total Care	The Olson Group
Northwest Respiratory	

## BRONZE LEVEL

360care	Midwest Geriatrics
Avera Education & Staffing Solutions	Molina Healthcare
Baird Holm	NE Hospice & Palliative Care Assoc
Bland and Associates	Omnicare
Choice Rehabilitation	PointClickCare
Eide Bailly (formerly Seim Johnson)	Prime Time Healthcare
Filament Information Services	RDG Planning & Design
FNIC (formerly Harry A Koch Co)	Rural Health Development
HealthGradeNetworks	Unico Group
HHS Solutions	United Healthcare of Nebraska
Infinity Rehab	UNO Department of Gerontology
Key Rehab	Ziegler
LTC Strategic Solutions	

## SMALL BUSINESS SUPPORTERS

Burnett Legal Group	MilliCare Lincoln-Omaha
Elder Dynamics	Normative Point
Health at Home Consultants	Pathway Consulting
Inspired Caring	

*Platinum* Business Associate



**LeadingAge Nebraska is proud to partner with Kathy Mock and her team at Gallagher Insurance in La Vista! Be sure to contact Kathy to hear about their amazing senior living workers' comp program!**

### Gallagher Insurance

9801 Giles Rd, Suite 2  
La Vista NE 68128  
Phone: (866) 809-6476

Kathy Mock, Area Vice President  
Kathy\_Mock@ajg.com

Provides placement of Property, Liability, Director & Officer Liability, Resident Trust Fund Bonds & Workers Compensation Insurance Programs just to name a few. Our programs include On-Site Risk Management Training at no charge to clients. Contracts with insurance carriers offering Dividend Programs on Liability & Workers Compensation Programs.

*Platinum*

*Gold* Business Associates



2208 N Webb Rd Unit 3, Grand Island, NE 68803 (308) 398-0538  
11171 Mill Valley Rd, Omaha, NE 68154 (402) 263-6430  
Ted Morrissey, Dir. of Sales & Marketing ted.morrissey@guardianpharmacy.net  
midwestltcpharmacy.com

As a proud member of the Guardian family since 2022, Midwest LTC Pharmacy and Guardian Pharmacy of Omaha are dedicated to delivering the highest possible level of care to residents of AL, SNF, developmentally-disabled group homes, and mental health facilities. Both our Grand Island and Omaha teams include pharmacists, licensed pharmacy consultants, certified pharmacy technicians, a nurse, billing experts, and experienced medication couriers.



HCIS Medi Bill  
450 Regency Parkway, Suite 100  
Omaha, NE 68114  
(402) 895-1450  
Jeff Heedum, Regional Manager jeffh@hcis-mbs.com  
www.hcis-mbs.com

HCIS and Medi Bill will help you provide quality care with cost containing and revenue enhancing programs. They provide the most comprehensive cost containment programs for Senior Care Providers, with proven means to maximize Medicare Part A and B income.





# McKESSON

McKesson  
2920 Courtney Drive  
Bellevue, NE 68123  
(402) 304-7856  
Jon Kunce, Senior Account Manager  
jon.kunce@mckesson.com www.mckesson.com



McKesson has partnered with Relias Learning to offer its members access to convenient and affordable online continuing education (CE) courses. As the leading source of online training content, Relias Academy offers an industry-leading library of accredited courses to licensed healthcare professionals nationwide. Integrity, Customer-first, Accountability, Respect and Excellence (ICARE) is at the heart of McKesson.



View360 Senior Care Management (Guru Alliance Software)  
Landmark Center, 1299 Farnam St., Suite 300  
Omaha, NE 68102  
402-990-4852  
Mike Fisk, Business Development MFisk@gurualliance.com  
www.gurualliance.com



"View360-Senior Care Management" is an in-the-cloud platform that consolidates and integrates the "right" data from multiple systems, databases, spreadsheets, etc. with unique applications and modules to effectively manage and track your services, clients, partners, and more: (finance, revenue, expense, scheduling, programs, services, operations, occupancy, clients, workforce, HR, referral data, grant management, and a host of other "critical path" activities.)



Fusion Workforce Solutions  
18881 W Dodge Rd, STE 400W  
Elkhorn, NE 68022  
877-230-3885

Dustin Ninemire, Director of Fusion Workforce Solutions & Business Development  
dustin.ninemire@fusionmedstaff.com FusionWorkforce.com



Fusion Workforce Solutions helps source and manage facilities' short-term staffing needs under a single contract. As your managed service provider, we work as an extension of your team to eliminate staffing roadblocks and other internal organizational needs. Our end goal is simple: Increase speed to placement, control costs with consistent rates and ultimately align with healthcare facilities to improve the quality of care.



arCureture  
2634 N. 48th St., Suite 100  
Lincoln, NE 68504  
(402) 805-4908  
Jeffrey Ahl, Principal jahl@cure.design  
www.cure.design



PEOPLE matter. EXPERIENCE matters. Founder and Principal, Jeffrey Ahl, knows that experience matters; experience saves time, saves money and enables possibilities to become realities. Jeff founded arCureture, in part, to provide Principal level leadership and experience for every project, start to finish. His years of diverse experience are supported by individuals who share in his mission to build lasting relationships with every client and to bring success to every project.

## BUSINESS ASSOCIATE LISTING

### 360care – Bronze Level

740 Commerce Dr  
Perrysburg OH 43551  
(502) 244-2452

Cherie Burton, Sales Administrator Cherie.Burton@360care.com  
<https://360care.com/>

360care specializes in caring for residents in senior care communities. We make it easy for residents to get needed care while meeting the needs of the communities. Whether insured through the 360care insurance program, Medicare and Medicaid, private insurance or private pay, we meet the ancillary treatment needs of all residents.



### arCureture – Gold Level

2634 N. 48th St., Suite 100  
Lincoln, NE 68504  
(402) 805-4908

Jeffrey Ahl, Principal jahl@cure.design  
[www.cure.design](http://www.cure.design)

arCureture is an architectural firm providing comprehensive building design and consulting services specializing in older adult housing.



### Avera Education & Staffing Solutions – Bronze Level

1000 W 4th St #9  
Yankton, SD 57078  
(605) 668-8475

Sheila Ulrich, Director Sheila.Ulrich@avera.org  
[www.avera.org/health-care-professionals/education-staffing-solutions/](http://www.avera.org/health-care-professionals/education-staffing-solutions/)

Avera Education & Staffing Solutions provides On-Line Training programs focused on preparing individuals in the healthcare environment, along with customized learning packages to healthcare facility promoting staff development. We provide Flexible Staffing (RNs, LPNs, and CNAs), to meet the needs of your facility staffing demands.

### Baird Holm, LLP – Bronze Level

1500 Woodmen Tower & 1700 Farnam Street  
Omaha, NE 68102-2068  
(402) 344-0500  
Scott P. Moore, [spmoore@bairdholm.com](mailto:spmoore@bairdholm.com)  
[www.bairdholm.com](http://www.bairdholm.com)

Baird Holm has an integrated team of attorneys, licensed in 19 states and is committed to connecting each of its valued clients to the positive outcomes they seek.



### Bland and Associates – Bronze Level

450 Regency Parkway, Suite 120  
Omaha, NE 68114  
(402) 397-8822  
Bob Dick, Director [bdick@blandcpa.com](mailto:bdick@blandcpa.com)  
[www.blandcpa.com](http://www.blandcpa.com)

We assist in developing systems to capture all the reimbursements and revenues that the organization is entitled to receive. Bland goes above and beyond when it comes to providing solutions to your organization. We understand the regulations and know how critical it is to have a thorough understanding of the health care environment. We provide CPA services and Medicaid and Medicare consulting and cost report preparation.



### Blue Stone Therapy – Silver Level

4319 NW Urbandale Drive  
Urbandale, IA 50322  
Jay Pfalzgraf, Chief Growth Officer, [jayp@bluestonetherapy.com](mailto:jayp@bluestonetherapy.com)  
[www.bluestonetherapy.com](http://www.bluestonetherapy.com)

Headquartered in Urbandale, IA, Blue Stone Therapy is the leading specialist in SNF therapy services. The company was founded in 2009 and provides specialized Physical Therapy, Occupational Therapy and Speech-Language Pathology services to healthcare providers in Colorado, Iowa, Minnesota, Missouri, Nebraska, North Dakota, and South Dakota.

**arCuretecture**  
culture and relationship driven  
architectural design

where VISIONS...

arCuretecture is an  
award-winning  
architectural firm providing  
comprehensive building  
design & consulting  
services specializing in  
senior living.

...become REALITIES

Do you have questions? We have answers. Contact us today!  
402-805-4908 | [www.cure.design](http://www.cure.design) | [jahl@cure.design](mailto:jahl@cure.design)

### Burnett Legal Group – Small Business/Supporter Level

17525 Arbor St  
Omaha, NE 68130  
(402) 827-0414

David M. Thompson, Associate Attorney [david@burnettlegalgroup.com](mailto:david@burnettlegalgroup.com)  
<https://www.burnettwilsonlaw.com/>

David M. Thompson is an elder law attorney with the Omaha firm of Burnett Legal Group, LLP, with a practice focused on long-term care planning, guardianships, Medicaid, veterans benefits, and helping families navigate the complicated world of services available to seniors in Nebraska. David has presented and published on a wide range of topics, including legal and financial planning for long-term care, health care decision-making, and elder financial abuse.



### CBS Construction Services – Silver Level

11124 Zealand Avenue North  
Champlin, MN 55316  
(612) 289-4592

Matthew Wagner, [mwagner@cbsconstruct.com](mailto:mwagner@cbsconstruct.com) <https://cbsconstruct.com/>

CBS Construction Services, Inc. is a general contractor specializing in multi-family housing and commercial buildings. Our work includes Independent Senior Housing/Memory Care/AL/Skilled Care/Affordable Housing/Market Rate Housing, Commercial Construction, Remodeling, and Renovations.



### Choice Rehabilitation – Bronze Level

12400 Olive Blvd Suite 425  
Crevecoeur, MO 63141  
(314) 275-9000

Cheryl Strickland, President [cstrickland@choicerehab.net](mailto:cstrickland@choicerehab.net)  
[www.choicerehab.net](http://www.choicerehab.net)

Choice Rehabilitation provides contract therapy services including physical, occupational and speech therapy to skilled nursing facilities.





### WHO IS CBS CONSTRUCTION SERVICES?

CBS Construction Services, Inc. is a general contractor specializing in multi-family housing and commercial buildings. Over the past twenty-five years, we have established an exceptional reputation for delivering professional, high quality, and on-time performance at very competitive pricing. In other words, we deliver the highest possible value to our clients. Our work includes:

- >> Independent Senior Housing/Memory Care/Assisted Living/Skilled Care
- >> Affordable Housing/Market Rate Housing
- >> Commercial Construction
- >> Remodeling and Renovations



### Cononus Healthcare – Silver Level

4560 SE International Way #101

Milwaukie, OR 97222

Gretna Pharmacy: (402) 289-0431

Rick B. Jackson, VP of Sales, rbjackson@cononushealth.com

www.cononushealth.com

Operating for over 30 years, Cononus provides rehab, pharmacy, and consulting services in over 700 facilities nation-wide. Most recently, Community Pharmacy joined the Cononus Healthcare family, expanding the pharmacy's geographic footprint to serve 50,000 seniors in eight states. But what makes Cononus truly unique is that we are run and led by a 5th generation nursing home administrator.



### Eide Bailly (formerly Seim Johnson) – Bronze Level

18081 Burt Street, Suite 200

Omaha, NE 68022

(402) 330-2660

Roger Thompson, Managing Partner, rthompson@seimjohnson.com

www.seimjohnson.com

We provide innovative tax, assurance & business consulting solutions to help you thrive in today's constantly changing marketplace. We take time to fully understand your goals & objectives, and utilize a team approach to ensure you have access to a range of experts dedicated to your success.





### **Elder Dynamics – Small Business/Supporter Level**

4121 Maple Hurst Dr S

Rockford, MN 55373

(763) 777-9043

Andy Edeburn, Founder and Managing Partner [andy@elderdynamics.com](mailto:andy@elderdynamics.com)

[www.elderdynamics.com](http://www.elderdynamics.com)

Founded formally in 2019, Elder Dynamics is a privately-held entity with a deep tradition of serving faith-based and non-profit aging services, eldercare, and post-acute care providers for nearly two decades. We focus on guiding and nurturing organizations to think about where they are, where they're going, and what they need to be doing about it. We offer a unique perspective for aging services and eldercare organizations seeking to grow, diversify, and align in the rapidly changing healthcare and senior services landscape.

### **Filament Information Services – Bronze Level**

1300 O Street, PO Box 82552

Lincoln, NE 68508

(402) 479-6661

Brendan Conway, Regional Account Manager [brendanc@fes.org](mailto:brendanc@fes.org)

<https://www.filamentsecurity.org/>

Providing expert guidance in security compliance, we are a nonprofit dedicated to helping organizations strengthen their information security. Our specialized services ensure compliance with industry standards, safeguarding your data and protecting your business.



### **FNIC (formerly Harry A Koch Company) – Silver Level**

14010 FNB Parkway, Suite 300

Omaha, NE 68154

(402) 861-7068

Tim McMahon [Tim.Mcmahon@fnicgroup.com](mailto:Tim.Mcmahon@fnicgroup.com)

[fnicgroup.com](http://fnicgroup.com)

FNIC offers areas of specialized service including: consulting, and placement of business insurance, employee benefits, surety bonds and personal lines insurance.



### **Fusion Workforce Solutions – Gold Level**

18881 W Dodge RD

Omaha, NE 68022

877-230-3885

Brandon Schafer [brandon.schafer@fusionmedstaff.com](mailto:brandon.schafer@fusionmedstaff.com)

<https://www.fusionworkforce.com/>

Fusion Workforce Solutions helps source and manage facilities' short-term staffing needs under a single contract. As your managed service provider, we work as an extension of your team to eliminate staffing roadblocks and other internal organizational needs. Our end goal is simple: Increase speed to placement, control costs with consistent rates and ultimately align with healthcare facilities to improve the quality of care.



We build relationships and get to know you because your risks are unique. We pay attention to the details and offer innovative solutions.

**fnic** Trusted insurance advisors

402.861.7000 | [fnicgroup.com](http://fnicgroup.com)

f i i n

### Gallagher Insurance – Gold Level

9801 Giles Rd, Suite 2

La Vista NE 68128

(866) 809-6476

Kathy Mock, Area Vice President [Kathy\\_Mock@ajg.com](mailto:Kathy_Mock@ajg.com)

[www.ajg.com/us/](http://www.ajg.com/us/)

Provides placement of Property, Liability, Director & Officer Liability, Resident Trust Fund Bonds & Workers Compensation Insurance Programs just to name a few...our programs include On-Site Risk Mngt Training at no charge to clients. Contracts with insurance carriers offering Dividend Programs on Liability & Workers Compensation Programs.




**FUSION**  
**WORKFORCE**  
SOLUTIONS

## A modern approach to healthcare staffing.

With Fusion Workforce Solutions, you gain access to a curated panel of agencies, compliance auditing, market rate insights, and real-time analytics, which are all designed to greatly reduce your administrative burden and free up valuable resources.

-  **One staffing agreement**  
Single contract to streamline rates and terms
-  **One concise invoice**  
Consistent rates regardless of agency
-  **One dedicated contact**  
Complete access to resources for billing, compliance, clinical, candidate flow, and more
-  **One consistent process**  
Quality travelers compliant and ready to start

learn more at [fusionworkforce.com](http://fusionworkforce.com)



**Guardian Pharmacy Services – Gold Level**

2208 N Webb Rd Unit 3, Grand Island, NE 68803 (308) 398-0538  
 11171 Mill Valley Rd, Omaha, NE 68154 (402) 263-6430  
 Ted Morrissey, Dir. of Sales & Marketing [ted.morrissey@guardianpharmacy.net](mailto:ted.morrissey@guardianpharmacy.net)  
[midwestltpcpharmacy.com](http://midwestltpcpharmacy.com)

As a proud member of the Guardian family since 2022, Midwest LTC Pharmacy and Guardian Pharmacy of Omaha are dedicated to delivering the highest possible level of care to residents of AL, SNF, developmentally-disabled group homes, and mental health facilities. Both our Grand Island and Omaha teams include pharmacists, licensed pharmacy consultants, certified pharmacy technicians, a nurse, billing experts, and experienced medication couriers.

**Health Care Information Systems-Medi Bill – Gold Level**

450 Regency Parkway, Suite 100  
 Omaha, NE 68114  
 (402) 895-1450  
 Jeff Heedum, Regional Manager [jeffh@hcis-mbs.com](mailto:jeffh@hcis-mbs.com)  
[www.hcis-mbs.com](http://www.hcis-mbs.com)

HCIS and Medi Bill will help you provide quality care with cost containing and revenue enhancing programs. They provide the most comprehensive cost containment programs for Senior Care Providers, with proven means to maximize Medicare Part A and B income.

**HealthGradeNetworks – Bronze Level**

1 Continental Drive  
 Norwalk, OH 44857  
 (419) 677-0144  
 Jason Shearer, VP of Sales [jshearer@healthgradenetworks.com](mailto:jshearer@healthgradenetworks.com)  
<https://www.healthgradenetworks.com>

HealthGradeNetworks, LLC is a technology solutions provider for senior living communities. We provide nurse call, elopement, telephony, networking, and wireless products and services to meet the needs of our clients' residents, staff, and organizations. While we retain a national footprint, we provide personal attention to each relationship and leverage our vast network of technology partners to present the best solution for your needs.

Quality First Insurance is now Gallagher  
 Insurance - same great service and  
 same great team!

## Are you getting dividends on your work comp program?

Since its inception in 2017 and the first  
 Dividend Calculation in 2019, Quality First  
 Insurance's Dividend Program Has Paid Out  
 Over \$538,031 back to clients!

*Give Kathy and her team a call to get a no obligation quote  
 on how you too can be part of this phenomenal program!*



Insurance | Risk Management | Consulting

*As a gold sponsor since 2013 we  
 are proud to represent LeadingAge  
 Nebraska and the members it serves.*

**Kathy Mock, Area Vice President**  
**9801 Giles Rd, Suite 2, LaVista, NE 68128**  
**866-809-6476 [Kathy\\_Mock@ajg.com](mailto:Kathy_Mock@ajg.com)**



**Built to be different.  
Built to be better.**

At Guardian, we are **reimagining medication management** and **transforming care** for older adults and individuals with complex care needs.

We promote health and wellness for older adults and individuals with complex care needs, alleviate burdens for caregivers, and provide an engaging, purpose-filled workplace for pharmacy professionals.

Guardian's tech-enabled pharmacy services simplify the complexities of medication management, improving individual health outcomes, enhancing medication adherence, reducing healthcare costs, and driving value for the communities we serve.

Our national network of pharmacies offers high-touch, innovative services that benefit residents in complex care settings, such as assisted living, mental and behavioral health, post-acute and long-term care, and hospice, as well as community providers that support individuals with intellectual and developmental disabilities.

### **Guardian Pharmacy of Omaha**

11171 Mill Valley Rd, Omaha | 402-263-6430

### **Midwest LTC Pharmacy**

2208 N Webb Rd Unit 3, Grand Island | 308-398-0538

### **Health at Home Consultants – Small Business/Supporter Level**

PO Box 67295

Lincoln, NE 68506

(402) 440-5268

Sheila Zelazny, Business Development [sheila@healthathomeconsultants.com](mailto:sheila@healthathomeconsultants.com)  
[healthathomeconsultants.com](http://healthathomeconsultants.com)

Health At Home Consultants offer various levels of care, ranging from routine physical exams to complex treatment plans. Nurse practitioners can serve as primary care providers or offer care on an "as needed" basis. If hospitalization is necessary, HAHC coordinates the admission process with your preferred hospital and ensures a smooth transition home with follow-up visits.



### **HHS Solutions – Bronze Level**

6130 S 58th Street, Suite C

Lincoln, Nebraska 68516

(402) 464-0054

Jessica Ridder, Billing Specialist

[Jessica@hhsolutions.com](mailto:Jessica@hhsolutions.com)

[www.hhsolutions.com](http://www.hhsolutions.com)

HHS Solutions is a professional medical billing and consulting company. Our mission is to maximize your reimbursement and give you more time to focus on what you do best – meeting the needs of your community and residents.



### **Infinity Rehab – Bronze Level**

8100 SW Nyberg Street, Suite 200

Tualatin, OR 97062

(971) 224-2018

Mark Wilhelm, VP of Client Services [MWilhelm@Infinityrehab.com](mailto:MWilhelm@Infinityrehab.com)

<https://infinityrehab.com>

Infinity Rehab provides occupational, physical, and speech therapy wherever patients call home. Through the leadership of industry-recognized therapists, Infinity Rehab serves skilled nursing, long-term care, home health, ACOs, hospitals, assisted living, and independent living communities across 18 states. Infinity Rehab is proud to be certified as a Great Place to Work for two consecutive years.



## HEALTH CARE INFORMATION SYSTEMS

the most comprehensive cost-containment purchasing program  
for senior living providers

## MEDI-BILL SYSTEMS

a proven means to maximize Medicare Part A and Medicare Part B income

*Contact us today to learn how you can connect  
with suppliers like these:*



helping you provide quality care with cost-containing and revenue-enhancing programs

## HEALTH CARE INFORMATION SYSTEMS / MEDI-BILL SYSTEMS

450 Regency Parkway, Suite 100, Omaha NE 68114  
800-888-1450  
hcis-mbs.com

## Inspired Caring – Small Business/Supporter Level

7536 Castle  
Papillion, NE 68046  
(913) 963-3916  
Michele Magner, Owner/CEO [michele@michelemagner.com](mailto:michele@michelemagner.com)  
<https://michelemagner.com/>

If you are helping out an aging family member, this is the place for you! Here, you will find inspiration, tools and resources that are needed to be prepared to take care of your loved one AND yourself along this caregiving journey. Michele Magner is a family caregiver, Gerontologist, Certified Dementia Practitioner, Professor, and has worked in the Senior Living Industry. She knows that everything we do today impacts our own aging outcomes, so she created the Inspired Caring Family Support & Education Program.



## Key Rehab – Bronze Level

1335 NW Broad St.  
Murfreesboro, TN 37129  
(888) 362-8704 x271  
Julye Smith, Regional Supervisor [info@keyrehab.com](mailto:info@keyrehab.com)  
<https://www.keyrehab.com/>

Key Rehab is a turnkey therapy partner in healthcare settings, including home health. Our programs are cost effective, and outcomes driven. Our divisions include: MDS Solutions and GeroPsych. MDS Solutions offers completion and consulting, both of which can be done on an interim or long-term basis. GeroPsych provides talk therapy on-site or through telehealth.



## LTC Strategic Solutions, LLC – Bronze Level

18807 Sahler St  
Elkhorn, NE 68022  
(402) 525-1225  
Linda Klaasmeyer, Owner [linda@arborcarecenter.com](mailto:linda@arborcarecenter.com)

LTC Strategic Solutions provides management and/or consultant services to skilled nursing facilities and assisted living facilities.



**Martin Brothers Distribution – Silver Level**

6623 Chancellor Drive  
Cedar Falls, IA 50613  
(800) 847-2404

Julie Halfpop, Director of Senior Living  
jhalfpop@martinsnet.com, www.martinsnet.com

Martin Bros. Distribution is a full-line foodservice distributor partnering with over 2000 senior living/ healthcare customers in the Midwest. This family owned company strives to provide foodservice with a difference which is built on trusted brands, legendary customer service, and innovative solutions. Our teams of 9 dietitians, 4 chefs, and knowledgeable sales consultants work hard to deliver a state of the art, complimentary menu process, educational tools, cost control resources, dining consultation, theme events, and much more.

**McKesson – Gold Level**

2920 Courtney Drive  
Bellevue, NE 68123  
(402) 304-7856 (Jon)

Jon Kunce, Senior Account Manager, jon.kunce@mckesson.com  
www.mckesson.com

McKesson Medical-Surgical offers more products, business solutions, distribution services, clinical support and education to long term care than other medical supply distributor. By working together, we can help you achieve better clinical and business outcomes. Let us support you so you can focus on providing the highest standards of care.

**Midwest Geriatrics, Inc. – Bronze Level**

7915 N 30th Street  
Omaha NE 68112  
(402) 827-6056

Lois Jordan, President/CEO ljordan@shf.org

Non-profit management company for Florence Home Healthcare Center, Royale Oaks, and House of Hope Assisted Living, House of Hope Alzheimer's Care, GeriMed and UniMed Pharmacies and Senior Health Foundation.

In this time of extreme complexity, Martin Bros. has pivoted alongside our customers to provide and implement solutions that

## DRIVE RESULTS

- STAFFING SOLUTIONS
- REGULATORY COMPLIANCE
- SPEND MANAGEMENT
- MARKETING ASSISTANCE

Click or scan here and see our efforts to meet the needs of our customers amidst COVID-19.

**Martin Bros.** DISTRIBUTING CO. INC. | EMPLOYEE OWNED

MARTINBROS.COM | (800) 847-2404

**Medicine in Motion (Homaha Senior Care) – Silver Level**

4908 Cass Street  
Omaha, NE 68132  
(402) 510-6073

Cassandra Gardner, COO cgardner@homahane.com  
medinmotionmd.com/

HOMAHA Senior Care dba Medicine in Motion, is a mobile geriatric clinic dedicated to delivering high-quality healthcare directly to seniors—wherever they call home. Whether through in-person visits or virtual consultations, we remove the barriers of traditional clinic settings by bringing the clinic to you. Our team of skilled healthcare professionals specializes in comprehensive senior care, including preventive health services, chronic disease management, immunizations, and wellness programs tailored to the unique needs of aging individuals. By integrating cutting-edge technology with personalized, hands-on care, we ensure seniors receive timely, convenient, and compassionate medical attention. At Medicine in Motion, we are committed to improving health outcomes, reducing hospitalizations, and enhancing the quality of life for seniors. Our mission is to redefine senior healthcare through innovation, accessibility, and patient-centered support—because great care should come to you.



## Clinical education on your schedule

### Get to know McKesson Academy™

Our no-cost online portal with over 270 resources and 60 CE training courses. Get your continuing education wherever and whenever works for you, for truly on-demand learning.

Join today at [mms.mckesson.com/mckesson-academy](https://mms.mckesson.com/mckesson-academy).

**Jon Kunce**, Account Manger  
jon.kunce@mckesson.com  
402.304.7856

© 2024 McKesson Medical-Surgical Inc.

**MCKESSON**

### Millicare Lincoln-Omaha – Small Business/Supporter Level

2500 Bretigne Circle

Lincoln, NE 68512

(402) 214-0730

David Graff, Owner David.Graff@millicare.com

[www.millicare.com/lincoln-omaha](http://www.millicare.com/lincoln-omaha)

At MilliCare Lincoln-Omaha, we specialize in providing high-quality professional floor cleaning services to various commercial clients in Lincoln and Omaha, because we understand that cleanliness matters. Our team knows that no two businesses operate the same way. That's why our highly trained experts will work with you to create a tailored cleaning plan that delivers the best results possible while meeting all of your individual needs and staying within your budget.



**531-359-6571**



**info@medinmotionMD.com**

**Molina Healthcare – Bronze Level**

14748 W. Center Road, Ste 104

Omaha, NE 68144

(531) 269-9391

Kiernan Scott, Manager [kiernan.scott@molinahealthcare.com](mailto:kiernan.scott@molinahealthcare.com)[www.molinahealthcare.com/members/ne](http://www.molinahealthcare.com/members/ne)

Molina Healthcare, Inc., a FORTUNE 500 company, provides managed health care services under the Medicaid and Medicare programs. What started in 1980 as one clinic in Long Beach, aimed at addressing the disparities in access to quality health care, has grown into 21 health plans across the country. Molina believes every person, family, and community deserves access to high-quality health care regardless of their situation. Our mission is to deliver effective, reliable and affordable health care to those who need it most. We strive to meet the physical, social and emotional needs of each member and to strengthen the communities we serve. We do this by offering a holistic, community-based approach designed specifically to meet the individual needs of our members.

**Nebraska Total Care – Silver Level**

2525 N 117th Ave

Omaha NE 68164

(308) 201-0455

Penny Warford, Senior Community Relations Coordinator

[Penny.A.Warford@NebraskaTotalCare.com](mailto:Penny.A.Warford@NebraskaTotalCare.com) [www.nebraskatotalcare.com](http://www.nebraskatotalcare.com)

Nebraska Total Care-your partner for success. Established to deliver quality healthcare in the state of Nebraska through local, regional and community-based resources, Nebraska Total Care is a Managed Care Organization and subsidiary of Centene Corporation (Centene). Nebraska Total Care exists to improve the health of its beneficiaries through focused, compassionate and coordinated care. Our approach is based on the core belief that quality healthcare is best delivered locally.

[NebraskaTotalCare.com](http://NebraskaTotalCare.com)**NE Hospice & Palliative Care Assoc (NHPCA) – Bronze Level**

1519 M St

Cozad, NE 69130


(402) 477-0204

Marilee Malcom, Executive Director [mmmalcom@nehospice.org](mailto:mmmalcom@nehospice.org)[www.nehospice.org](http://www.nehospice.org)

The Nebraska Hospice and Palliative Care Association (NHPCA) is a collaborative effort of approximately 70 organizations with an interest in good care for terminally and chronically ill Nebraskans. Established as a 501(c)3 community betterment non-profit in 1983, NHPCA includes Nebraska's hospices, community end-of-life coalition, and statewide health and elder care organizations.



**Tired of overpaying?  
You have choices.**



**Northwest  
Respiratory  
Services**

**Negative Pressure Wound Therapy**

- ✓ Same-Day Delivery
- ✓ User-Friendly, Quiet Machine
- ✓ Credit for Unopened Supplies
- ✓ Medicare Denial Billing for Qualifying Patients
- ✓ Proven Outcomes

**CALL TODAY!** 1 800 232 9706  
www.nwrespiratory.com

### **Normative Point – Small Business/Supporter Level**

4435 O Street, Ste 212-L

Lincoln, NE 68505

(402) 414-2301

Paul Rieken, Founder/Facilitator paul@normativepoint.com  
normativepoint.com/

Normative Point, LLC is a training and professional development consultancy with a personal, practical, and cost-effective approach to solving an organization's training and development needs.

### **Northwest Respiratory Services – Silver Level**

3700 S. 6th Street, Suite 2B

Lincoln NE 68502

(800) 232-0706

Mark Badenhoff, CMO mbadenhoff@nwrespiratory.com

<https://www.nwrespiratory.com/>

We carry a complete line of oxygen, respiratory products, negative pressure wound therapy (wound vac) products and services for long-term care and home patients. Respiratory consultations available and clinical support for negative pressure wound therapy available.



### **Omnicare – Bronze Level**

4621 121st St

Urbandale, IA 50323

(515) 727-8090

Stephanie Mills, Director Stephanie.Mills@omnicare.com

[www.omnicare.com](http://www.omnicare.com)

Omnicare is a national, leading pharmacy for skilled nursing facilities. Our high-value pharmacy and clinical offerings are optimized for providers and help you and your staff focus on providing quality care while making every dollar count. We take pride in providing excellent customer service at an exceptional value.



### **Pathway Consulting – Small Business/Supporter Level**

7634 S 38th St

Lincoln, NE 68516

(402) 440-7794

Spencer Morris, Owner spencer@pathwayconsultingservice.com

[www.pathwayconsultingservice.com](http://www.pathwayconsultingservice.com)

At Pathway Consulting, we are YOUR PARTNER IN PROGRESS; we will evaluate your greatest opportunities, maximize efforts to accelerate your rate of progress, and ultimately assist you in achieving your goals. We focus on the leadership development of you and your team leaders. We create an intentional program to improve the culture of your team. When team culture is strong and engaged, the sky is the limit for its potential.



**MORE TO SAVE. MORE TO GAIN.**

PHV membership provides access to the nation's leading GPO, offering more than 2,000 contracts in areas like:

- ❖ Food Service and Medical Nutritionals
- ❖ Business Equipment & IT/Telecom
- ❖ Medical Supplies
- ❖ Housekeeping & Facilities
- ❖ Purchased Services
- ❖ Employee Discounts & Much More

Join our healthcare alliance of over 500 members benefiting from PHV's expertise in technology, administrative solutions and other shared services aimed at improving costs and business performance.

Call 800.409.4990 or visit [PHVne.com](http://PHVne.com) today!




### **Prairie Health Ventures – Silver Level**

575 Fallbrook Blvd, Suite 204

Lincoln, NE 68521

(402) 802-8397

Kevin Sypal, Director, Business Development [kevin.sypal@phvne.com](mailto:kevin.sypal@phvne.com)

[www.phvne.com](http://www.phvne.com)

PHV is a regional alliance of more than 50 hospitals and over 600 non-acute organizations across the Midwest. PHV supports healthcare facilities with solutions aimed at optimizing cost, access and quality with services across purchasing, pharmacy, technology, administrative & population health.

### **PointClickCare Technologies – Bronze Level**

5570 Explorer Drive

Mississauga, ON L4W0C4

(416) 303-1377

Jennifer Tomowich, Events Project Manager [associations@pointclickcare.com](mailto:associations@pointclickcare.com)

PointClickCare is a leading healthcare technology platform enabling meaningful collaboration and access to real-time insights at any stage of a patient's healthcare journey. PointClickCare's single platform spans the care continuum, fostering proactive, holistic decision-making and improved outcomes for all. Over 27,000 long-term post-acute care providers, and 2,700 hospitals use PointClickCare today, enabling care collaboration and value-based care delivery for millions of lives across North America.



### **Prime Time Healthcare – Bronze Level**

15380 Weir St

Omaha, NE 68137-5005

(402) 505-5168

Jennifer Syphers, CSO [jsyphers@primetimehealthcare.com](mailto:jsyphers@primetimehealthcare.com)

As one of the nation's leading providers of contract healthcare professionals, Prime Time Healthcare is a trusted name in the industry. Our agency specializes in placement of RNs, LPNs, CNAs, Allied Health & Therapy professionals. Our mission is to help healthcare professionals live life to the fullest, achieve their full potential, and help healthcare facilities perform at their best. The purpose of our company is to provide complete workforce solutions for the healthcare industry.



### **Redler's LTC Pharmacy – Silver Level**

13831 Chalco Valley Parkway, Suite 101

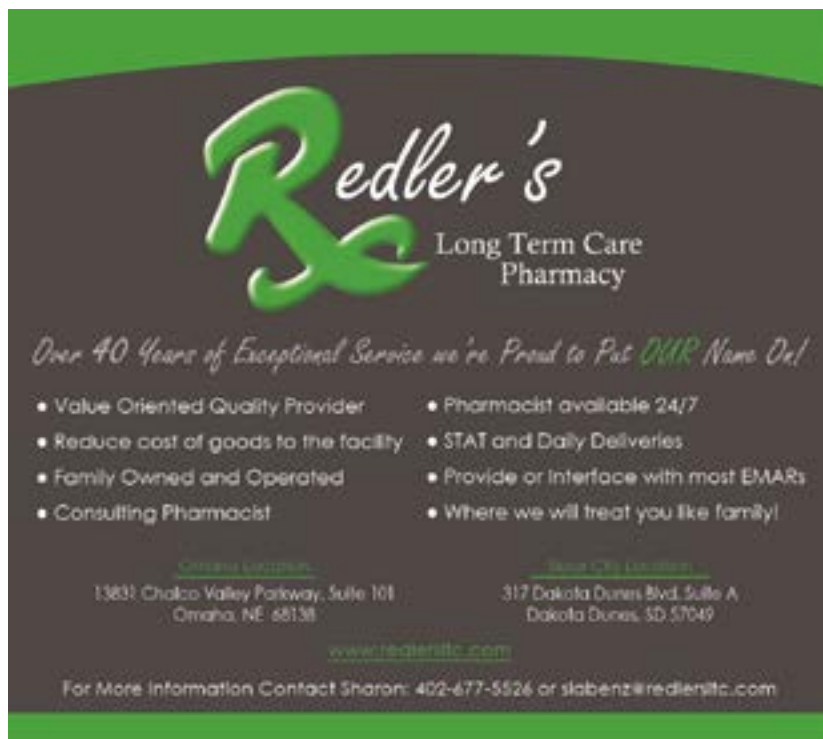
Omaha, NE 68138

(402) 592-5244

Sharon Labenz, Marketing Executive, [slabenz@redlersltc.com](mailto:slabenz@redlersltc.com)

[www.redlersltc.com](http://www.redlersltc.com)

Redler's LTC Pharmacy is a family owned and operated pharmacy specializing in senior living and other communities in the Long Term Care industry for more than 40 years. A value oriented quality provider where we treat you like family!



### RDG Planning & Design – Bronze Level

900 Farnam on the Mall, Suite 100

Omaha NE 68102

(402) 392-0133

Scott Pfeifer spfeifer@rdgusa.com Mitch Elliott mellioth@rdgusa.com

www.rdgusa.com

RDG is your creative partner for enhancing senior living environments that provide meaningful experiences for residents and their care-giving team. We help our clients succeed by working collaboratively, beginning with a values-based vision in the master planning process, to provide master planning through architectural & construction services all the while sensitive to financing, marketing and scheduling issues.

### Rural Health Development – Bronze Level

1640 S 70th St, Ste 200

Lincoln, NE 68506

(308) 697-4921

Matt Ross, VP/Eastern Regional Manager matt.ross@rhdconsult.com

www.rhdconsult.com

Professional consulting services. Offering facility management, operational analysis, strategic planning, nurse consulting and inservicing, rural health clinics, reimbursement specialists, and HIPAA specialist for communities and providers.



### Schemmer – Silver Level

1044 N 115th Street Suite 300

Grimes, IA 50111

(402) 493-4800 x6309

Shane Larsen, Principal slarsen@schemmer.com

www.schemmer.com

Schemmer is a full-service Architectural/Engineering firm located in Nebraska, Iowa, South Dakota, Oklahoma and Colorado. We have a dedicated team of Senior Living experts that have been advocates for the advancement of the senior living resident.



### Sysco Lincoln – Silver Level

900 Kingbird Road

Lincoln NE 68521

(402) 421-5245

Josh Torell, Healthcare Account Manager joshua.torell@sysco.com

Sysco.com

Sysco brings an extraordinary range of capabilities and valuable services to acute and senior dining operations – from food and beverages to supplies, equipment, and systems. Sysco employs hundreds of chefs, dietitians and certified dietary managers throughout our company to support the unique needs of healthcare. Our commitment to serving the healthcare market means we have top quality products designed to meet your special needs.



**Southeast Community College – Silver Level**

8800 'O' Street, Lincoln, NE 68520-1299

LTCA Contact: Tracie Klosterman, TKlosterman@southeast.edu

(402) 437-2426

DM Contact: Vicki Rethmeier, vrethmeier@southeast.edu

(402) 437-2528

LPN Contact: Ashley Fritz, afritz@southeast.edu (402) 437-2731

RN Contact: Tonya Maloy, tmaloy@southeast.edu (402) 437-2730

Southeast Community College (SCC) is an accredited college where you can earn an Associate of Science (AAS) degree or Certificate in many health related programs, including Long Term Care Administration (LTCA), Nursing, and Dietary Management (DM). SCC offers a certificate in LTCA for those who already have a degree and need to meet state licensure education requirements. LTCA and DM courses are 100% online. Practical nursing (LPN) & associate degree nursing (RN) have various educational pathways for FT and PT students with hybrid instructional methods as lab, and clinical skills are required to complete these 1 - 2 year degrees.

**The Olson Group – Silver Level**

16820 Frances Street, Suite 202

Omaha NE 68130

(402) 289-1046

Tim Olson, Managing Partner, olson@theolsongroup.com

www.theolsongroup.com

The Olson Group is a benefits consulting firm that develops cutting edge solutions for clients with their employee benefit programs, compliance initiatives, risk management, and wellness agendas. With over 500 employer benefit programs covering more than 20,000 employees, the firm is known for its unparalleled customer service and extensive knowledge on the Affordable Care Act.



## SENIOR LIVING FACILITY ASSESSMENTS PLANNING & DESIGN



Mark Higgins, AIA, LEED AP BD+C and Shane Larsen, AIA

888.877.8127 | SCHEMMER.COM

## SCC grads put person-centered care first

Other SCC programs that  
work closely with Long Term  
Care Administration:

- Dietary Manager
- Practical Nursing
- Associate Degree Nursing
- Nursing Assistant
- Medication Aide
- Physical Therapist Assistant

**Shari Little, administrator  
at Nebraska P.E.O. Home  
in Beatrice, graduated  
from SCC with an A.A.S. degree  
in Long Term Care Administration**



## Unico Group – Bronze Level

7026 South 148th Road

Adams, NE 68301

(402) 560-3212

Jeff Fritzen, Risk Advisor, [jfritzen@unicogroup.com](mailto:jfritzen@unicogroup.com)

[www.unicogroup.com](http://www.unicogroup.com)

Unico Group- Property/Casualty Insurance and Employee Benefits

UNICO Group is a client-focused insurance broker headquartered in Lincoln, Nebraska. Our consultative and relational approach develops customized solutions for clients all around the nation.

At UNICO, we are fueled by our core values: Professional, trust, team player and positive. By living our values and providing the best insurance products, service, and support to our clients, we strive to create lasting connections and partnerships.

**Are you tired of dealing with unpredictable, year-to-year health insurance rate fluctuations?**

**We collaborate with employers to deliver benefits plans your employees value.**

**Stop fearing your renewal date and gain control of your benefits plan today!**

T: 402.289.1046

E: [info@theolsongroup.net](mailto:info@theolsongroup.net)

**theolsongroup**  
BENEFITS TEAM

**INGENIUM VALUED SERVICES**  
**SOLUTIONS DESIGNED FOR HEALTHCARE**

<p><b>MENU &amp; RESIDENT MANAGEMENT</b></p> <ul style="list-style-type: none"> <li>NextMRC – robust integration</li> <li>IMPAC Direct – electronic reports</li> <li>25,000+ recipes</li> <li>EMR interface</li> <li>Real-time and customer-specific pricing</li> <li>Traditional and Upscale Menus</li> </ul>	<p><b>NUTRITION</b></p> <ul style="list-style-type: none"> <li>eNutrition program</li> <li>Nutrition report</li> <li>View product nutrition in Sysco Shop</li> </ul>	<p><b>EDUCATION</b></p> <ul style="list-style-type: none"> <li>KEYS program for staff training</li> <li>Online culinary training</li> <li>ServSafe Food Manager Certification</li> <li>Monthly continuing education for RDS, CDMs, Chefs</li> <li>Monthly newsletter</li> <li>Online learning library</li> </ul>
--	--	--

LEARN MORE AT [SYSCO.COM](http://SYSCO.COM)

**Sysco**

## United Healthcare of Nebraska – Bronze Level

2717 N 118th Street, Suite 300

Omaha, NE 68164

(402) 445-5453

Kim Manning, Director, [kim\\_b\\_manning@uhc.com](mailto:kim_b_manning@uhc.com)

[www.uhccommunityandstate.com](http://www.uhccommunityandstate.com)

UnitedHealthcare Community Plan of Nebraska has served Heritage Health Medicaid clients in the state since 1996. We are dedicated to providing solutions that care for the economically disadvantaged, the medically underserved and those without the benefit of employer-funded health care coverage. UnitedHealthcare Community Plan offers distinctive health care programs and value-added services tailored to the needs of Medicaid beneficiaries.



**UNO Department of Gerontology – Bronze Level**

6001 Dodge Street, CPACS 211

Omaha, NE 68182-0202

(402) 554-2272

Dr. Christopher Kelly, Department Chair, cmkelly@unomaha.edu

www.unomaha.edu/gero

Preparing people to serve the field of aging by giving them the skills and tools they need to serve an ever aging population through quality expert education offered on-campus or online.

**View 360–Senior Care Management (Guru Alliance Software) – Gold Level**

The Landmark Center 1299 Farnam St., Suite 300

Omaha, NE 68102

(402) 990-4852

Mike Fisk, Business Development mfisk@gurualliance.com

www.gurualliance.com

“View360–Senior Care Management” is an in-the-cloud platform that consolidates and integrates the “right” data from multiple systems, databases, spreadsheets, etc. with unique applications and modules to effectively manage and track your services, clients, partners, and more: (finance, revenue, expense, scheduling, programs, services, operations, occupancy, clients, workforce, HR, referral data, grant management, and a host of other “critical path” activities.)

**Ziegler – Bronze Level**

One North Wacker Drive, Suite 2000

Chicago IL 60606

(312) 263-0110

William Carney, Managing Director wcarney@ziegler.com

www.ziegler.com

Nation’s leading investment banking firm in long-term care finance.



**Custom Software Development  
and Related IT Services**

**View360** An “in the cloud” Senior  
Care Management Platform

**View360** consolidates the “right” data from  
multiple systems, databases, spreadsheets,  
partners, etc. ...

*... and offers unique applications and modules to  
effectively manage, track & evaluate services, clients,  
departments, and internal/external environments.*

**It is a menu-driven, license-based platform  
with modules constomized to your  
organization.**

Modules include dashboards, charts, graphs, analytics,  
drill-down/multiple levels, custom reports, alerts,  
custom applications, and more.

**All Your Data, Your Way**

**Contact Mike Fisk, Business Development,  
for more information!  
mfisk@gurualliance.com 402-990-4852**

The Landmark Center, 299 Farnam St. Suite 300 Omaha, NE 68102  
www.gurualliance.com



# ripples of IMPACT

LeadingAge®  
Nebraska



## MISSION STATEMENT

Expanding the World of Possibilities for Aging  
through Advocacy, Education & Collaboration.

## VISION STATEMENT

Be the catalyst of innovation for our members  
to serve the aging community.

### LeadingAge Nebraska

625 S. 14th Street, Ste A Lincoln, NE 68508  
402.975.8436 • [www.LeadingAgeNE.com](http://www.LeadingAgeNE.com)

LeadingAge®  
Nebraska